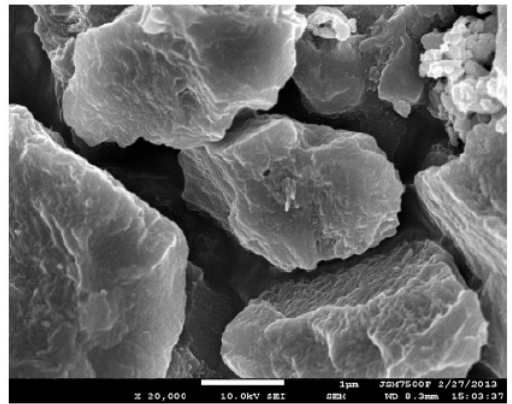
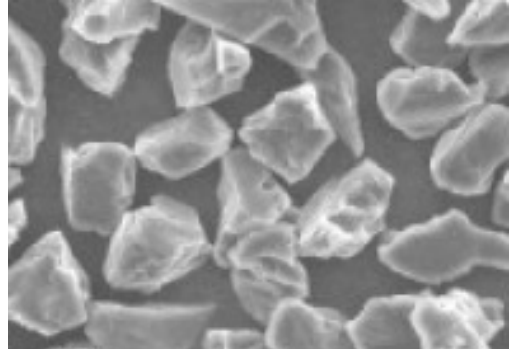


DMP Series

Micron Diamond & CBN
for Precision Grinding & Polishing



Ver. 11.6

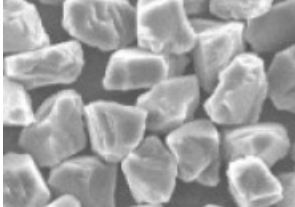


DMP Series *Micron Diamond & CBN for Precision Grinding & Polishing*

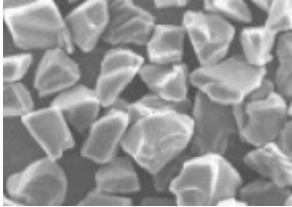
Item		Grade	Properties	Application
Diamond	Metal	DMPM-P	Premium grade, controlled shape & PSD	Si/sapphire wafer slicing and dicing, lapping
		DMPM-1	Standard grade	Glass, wafer, PCD lapping/polishing/grinding
		DMPM-2	Economic quality	General purpose
	Resin	DMPM-3	Sharp cutting edge	Wafer back grinding
CBN		DMPR-2	Standard grade for resin & vitrified	Glass, Carbide, Ceramic grinding PCD/PCBN grinding
		DMPC-B	Black, high micro-chipping ability	Honing/Double disk, Precision grinding
		DMPC-A	Amber, High thermal stability, blocky shape	Used in fine grinding, for high tool-life
	DMPC-D	Dark Brown, Sharp edge	High grinding ability	
As-grown Dia.		DMPAG	As-grown diamond	Metal/Electroplating, Precision grinding, LCD glass
Excellent Free Cutting Dia.		DMPPL	Excellent free cutting behavior	Precision grinding, Silicon wafer back grinding
Polycrystalline Dia.		DMPDP	Polycrystalline diamond	Sapphire/Ceramic lapping & polishing

Micron Diamond

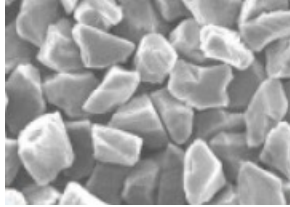
DMPM-P



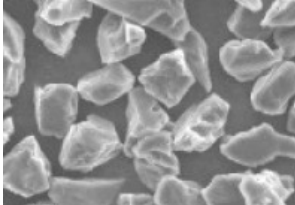
DMPM-1



DMPM-2

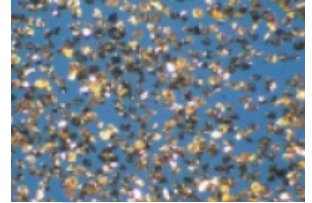


DMPR-2

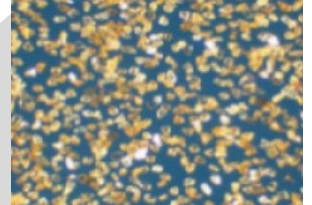


Micron CBN

DMPC-B

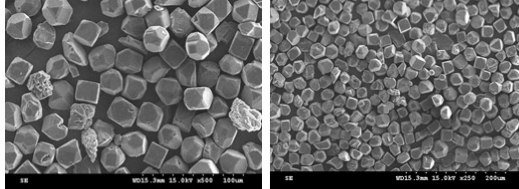


DMPC-A

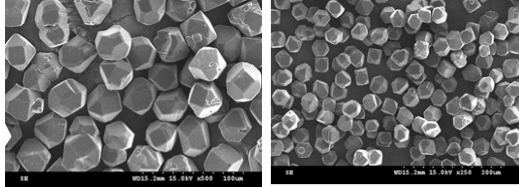


As-grown Micron Diamond

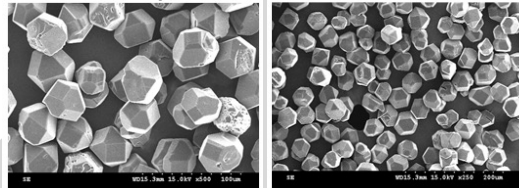
DMPAG 20-30µm



DMPAG 30-40µm

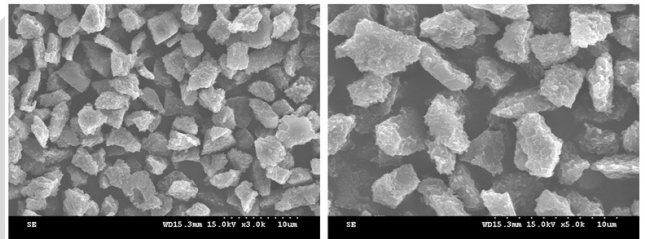


DMPAG 40-50µm

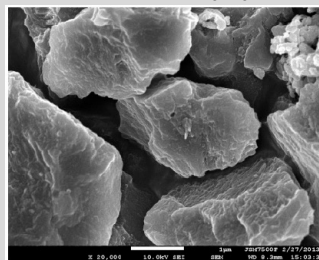


MP for Precision Lapping & Polishing

DMPPL 2-4µm (Excellent Free Cutting)



DMPDP 2-4µm (Polycrystalline Diamond)



DMP Series *Available Micron Size*

Size	Metal Diamond			Resin Diamond	CBN			DMPAG	DMPPL	DMPPD
	DMPM-P	DMPM-1	DMPM-2	DMPR-2	DMPC-B	DMPC-A	DMPC-D			
0-0.05										
0-0.1										
0-0.125										
0-0.2										
0-0.25										
0-0.5										
0-1										
0-2										
1-2										
1-3										
2-4										
2-5										
3-5										
4-6										
4-8										
5-10										
6-12										
7-10										
8-12										
8-16										
10-15										
10-20										
12-22										
15-25										
20-30										
22-36										
20-40										
30-40										
40-50										
40-60										
50-60										

* Ni, Ti Coating availability : Diamond $\geq 5-10\mu\text{m}$, CBN up to $\geq 15-25\mu\text{m}$

Headquarter

59 Beong-gil, 29 Sandong-Ro, Eumbong-Myeon, Asan-Si, Chungchungnam-do,
31419 Republic of KOREA

Factory

1-707, ACE Dongback Tower, 16-4 Dongback Jungang-Ro, 16 Beon-Gil, Giheung-
Gu, Yongin-Si, Gyeonggi-Do, 17015 Republic of KOREA
Tel : +82 70 4334 2023
Fax : +82 505 807 1000

E-mail

- info@dia-lux.com or jseol1@dia-lux.com

